

Bureau of Land Management/US Forest Service

# Update on BLM/FS Greater Sage-grouse Planning Efforts in the Great Basin for the Great Basin Consortium Conference – Dec. 9, 2013

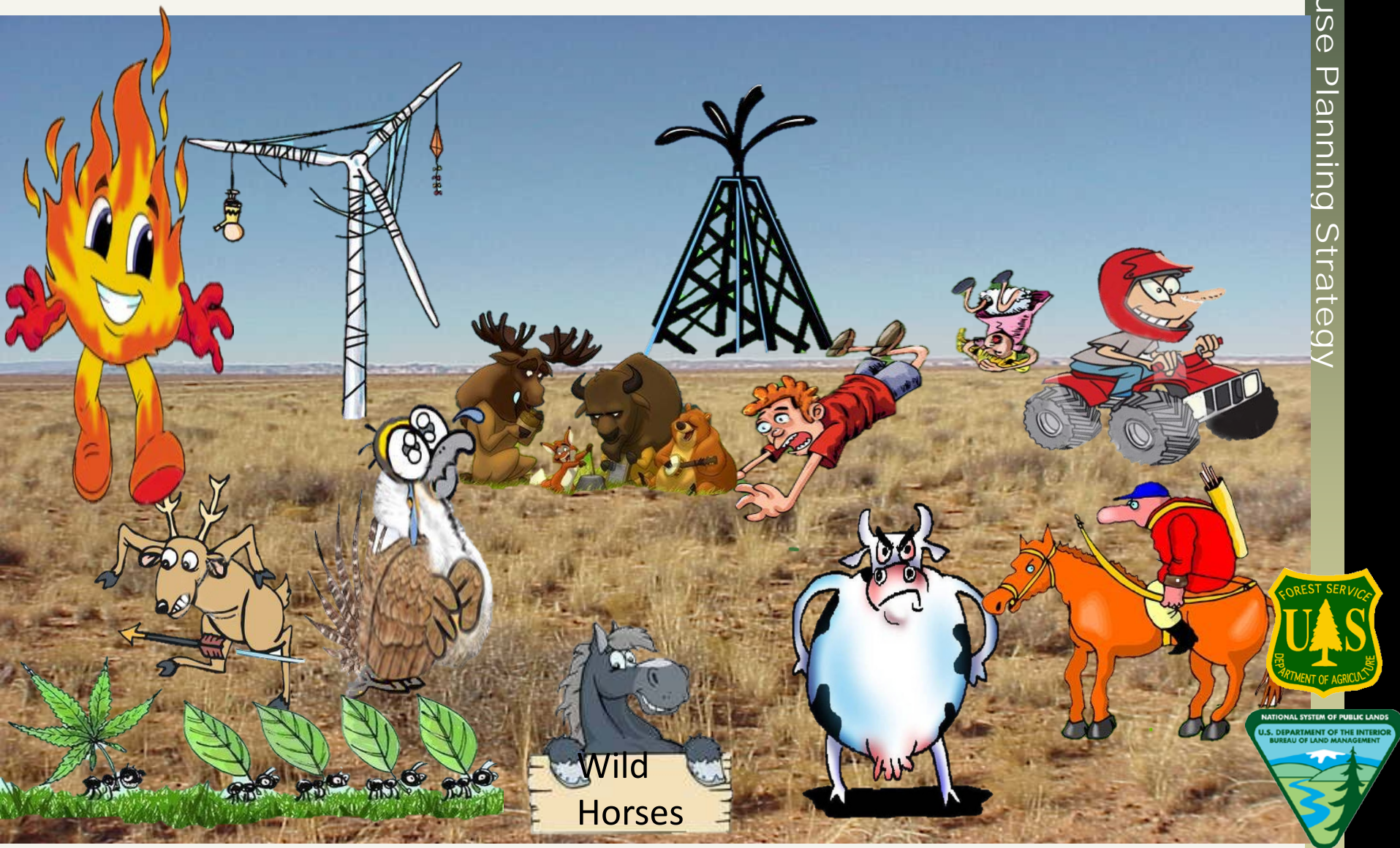
**BLM** - Forest Service  
Sage-Grouse Planning Strategy

Lauren Mermejo  
Great Basin Greater Sage-Grouse Project Manager  
BLM – Nevada State Office





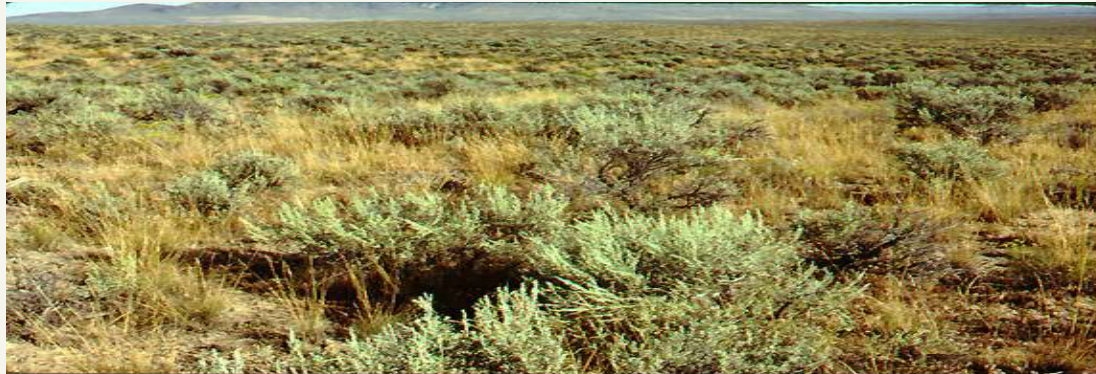
# BLM's Mandate for Public Lands: Multiple Use – Sustained Yield



# National GRSG Planning Strategy

## Purpose

Identify and incorporate appropriate conservation measures in LUPs to conserve, enhance, and restore GRSG habitat by reducing, eliminating, or minimizing threats to that habitat.



## Need

Respond to the US Fish and Wildlife Service's (FWS) March 2010 "warranted, but precluded" Endangered Species Act (ESA) listing petition decision, which identified inadequacy of regulatory mechanisms as a significant threat to Sage-Grouse. The principal regulatory mechanism for BLM and FS is conservation measures in BLM's and FS's LUPs.





# What Are We Doing?

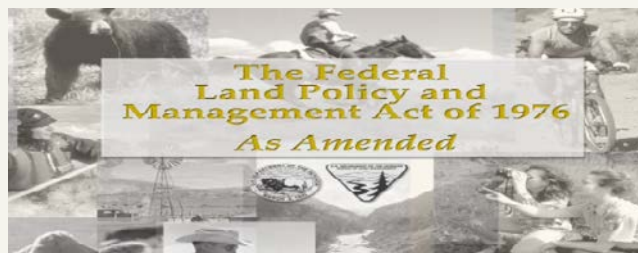


- ❖ 15 Ongoing Plans/EISs across 10 States
- ❖ Unprecedented endeavor with schedules and coordination, – landscape scale planning efforts
- ❖ 4 in the Great Basin Region (Oregon, Idaho/SW Montana, Utah, and Nevada/NE California); 11 in the Rocky Mtn. Region (Montana, N. and S. Dakota, Wyoming, and Colorado)
- ❖ Draft EISs available for review and comment
- ❖ Proposed Plan Amendments will be released this Summer



# BLM and FS Planning Process

- Enabling Land Use Planning Legislation
  - BLM: The Federal Land Policy & Management Act of 1976 (Section 202)
  - FS: The National Forest Management Act of 1976 (Section 6)
- Land Use Planning Process is largely structured to comply with the National Environmental Policy Act (NEPA) process



# BLM and FS Planning Process

## Major Stages in the Planning Process

- **Draft Land Use Plan/Draft EIS** = range of reasonable alternatives & draft impact analysis from those alternatives
  - **No Action Alternative**: Description of existing management direction from current decisions from existing relevant plans
  - **Action Alternatives**: a series of management options that address the identified planning issues and purpose and need.
  - **Preferred Alternative**: an action alternative that meets statutory requirements, represents the agency's best combination of management actions to archives the goals and policies of the BLM. Does not constitute a commitment or decision in principle.
- **Proposed Land Use Plan/Final EIS** = Proposed Plan and Final Impact Analysis which responds to public comments.
- **Record of Decision/Approved Land Use Plan** = Agency's final decision
- **Implementation Planning** = Agency's activity level planning as to how to manage "on-the-ground" authorizations that are guided by land use plan decisions.





# Planning Process



National Greater Sage-Grouse Planning Strategy—Western Region

Issued  
Dec 9 2011

Issue Notice of Intent  
to prepare RMPAs/  
EISs and begin scoping

Document Existing  
Conditions and  
Management

Conduct Scoping  
Provide minimum 60-day comment  
period on issues & planning criteria  
Document results in **Scoping Report**

Dec 2011-  
Feb 2012

Indicates Opportunity  
for Public Involvement

**Formulate Alternatives**

**Analyze Effects of Alternatives**

Spring  
2012—  
Summer 2013

**Select Preferred Alternative**

**Prepare Draft RMPAs/Draft EISs**

Summer—Fall  
2013

**Publish Notices of Availability**  
Provide minimum 90-day public  
comment periods

November  
2013

**Prepare Proposed RMPAs/Final EISs**

Winter-  
Spring 2014

**Publish Notices of Availability**  
Provide 30-day protest periods  
Resolve protests

**Provide 60-day Governor's  
Consistency Review periods**

**Prepare Records of  
Decision/Approved RMPAs**

Summer-Fall  
2014

**Implement, Monitor and  
Evaluate Plan Decisions**



© 2005 D.A. Rintoul

We are  
here.



# National GRSG Planning Strategy

## Consistent Components of all Plan Amendment EISs in the Great Basin

- Draft Alternatives Being Analyzed
  - No Action Alternative
  - National Technical Team (NTT) Alternative
  - 2 Citizen Based Alternatives Derived from Scoping (combined into one for Utah)
  - BLM/FS Alternative (Oregon – only BLM, no FS)
  - State/Governor's Alternatives
- Goals and Objectives for Wildland Fire Management and Management Actions for Fuels Management, Preparedness, and Fire Management (Suppression)
- Monitoring Framework
- Mitigation Strategy
- Cooperating Agencies
  - USFWS
  - US Forest Service
  - FAA
  - State Governments
  - Certain County Governments





# Governor's/State Alternative

- ❖ All four Plan Amendments have Alternative E identified as the Governor's/State Alternative
  - Oregon's Alternative E reflects the ODF&W Strategy
  - Idaho's Alternative E reflects the Governor's Final Plan, and was also carried forward as one of the dual preferred alternatives
  - Nevada's Alternative E reflects the Governor's Draft Plan
  - Utah's Alternative E reflects the Governor's Final Plan
- ❖ Difficult to transcribe into BLM/FS language
- ❖ Much effort and coordination will continue between the Federal Agencies and Governor's/State staffs as we work towards crafting the Proposed Plans



# Nevada/NE California Draft Comment Period and Public Meetings

- ✓ **Draft Released for Public Comment – November 1<sup>st</sup>, 2013**
- ✓ **90-day Public Comment Period Ends – January 29<sup>th</sup>, 2014**
- ✓ **Public Meetings – December 2013**

- |                          |                                  |
|--------------------------|----------------------------------|
| • Cedarville, California | December 3 <sup>rd</sup> , 2013  |
| • Susanville, California | December 4 <sup>th</sup> , 2013  |
| • Reno, Nevada           | December 5 <sup>th</sup> , 2013  |
| • Tonopah, Nevada        | December 9 <sup>th</sup> , 2013  |
| • Ely, Nevada            | December 10 <sup>th</sup> , 2013 |
| • Elko, Nevada           | December 11 <sup>th</sup> , 2013 |
| • Winnemucca, Nevada     | December 12 <sup>th</sup> , 2013 |



All meetings to be held from 5:30 – 7:30 pm (places to be announced)



# Idaho/SW Montana Draft Comment Period and Public Meetings

- ✓ Draft Released for Public Comment – November 1<sup>st</sup>, 2013
- ✓ 90-day Public Comment Period Ends – January 29<sup>th</sup>, 2014
- ✓ Public Meetings – January 2014

- Murphy, Idaho - January 6<sup>th</sup>, 2014
- Idaho Falls, Idaho - January 7<sup>th</sup>, 2014
- Salmon, Idaho - January 8<sup>th</sup>, 2014
- Dillon, Montana - January 9<sup>th</sup>, 2014
- Pocatello, Idaho - January, 13<sup>th</sup>, 2014
- Twin Falls, Idaho - January 14<sup>th</sup>, 2014
- Boise, Idaho - January 15<sup>th</sup>, 2014



All meetings to be held from 5:30 – 7:30 pm (places to be announced)





# Oregon Draft Comment Period and Public Meetings

- ✓ Draft Proposed for Release for Public Comment – November 22, 2013
- ✓ 90-day Public Comment Period Ends – February 19, 2014
- ✓ Proposed Public Meetings – January 2014

- |                      |                  |
|----------------------|------------------|
| • Prineville, Oregon | January 6, 2014  |
| • Burns, Oregon      | January 7, 2014  |
| • Ontario, Oregon    | January 8, 2014  |
| • Baker City, Oregon | January 9, 2014  |
| • Lakeview, Oregon   | January 13, 2014 |



All meetings to be held from 5:30 – 7:30 pm (places to be announced)



# Utah Draft Comment Period and Public Meetings

- ✓ **Draft Released for Public Comment – November 1<sup>st</sup>, 2013**
- ✓ **90-day Public Comment Period Ends – January 29<sup>th</sup>, 2014**
- ✓ **Public Meetings – November – December 2013**
  - Richfield , Utah - November 19<sup>th</sup>, 2013
  - Cedar City, Utah - November 20<sup>th</sup>, 2013
  - Panguitch, Utah - November 21<sup>st</sup> 2013
  - Vernal, Utah - December 4<sup>th</sup>, 2013
  - Price, Utah - December 5<sup>th</sup>, 2013
  - Salt Lake City, Utah - December 10<sup>th</sup>, 2013
  - Randolph, Utah - December 11<sup>th</sup>, 2013
  - Snowville, Utah - December 12<sup>th</sup>, 2013



All meetings to be held from 5:30 – 7:30 pm (places to be announced)







# Questions and Discussion

