



# BLM's Landscape Approach Taking the Next Step Beyond the Boundaries

Amy Lueders  
Nevada BLM State Director

# Purpose of Today's Discussion

- Provide an overview of where we are in implementing the BLM's Landscape Approach
- Highlight the next steps in landscape level actions
- Discuss opportunities for collaboration through partnerships

# Vision for BLM's Landscape Approach

Develop business practices to manage resources and uses at multiple scales in the face of compounding stressors. **These practices will help the BLM and partners identify what to sustain, at what scale, and the associated trade-offs.**

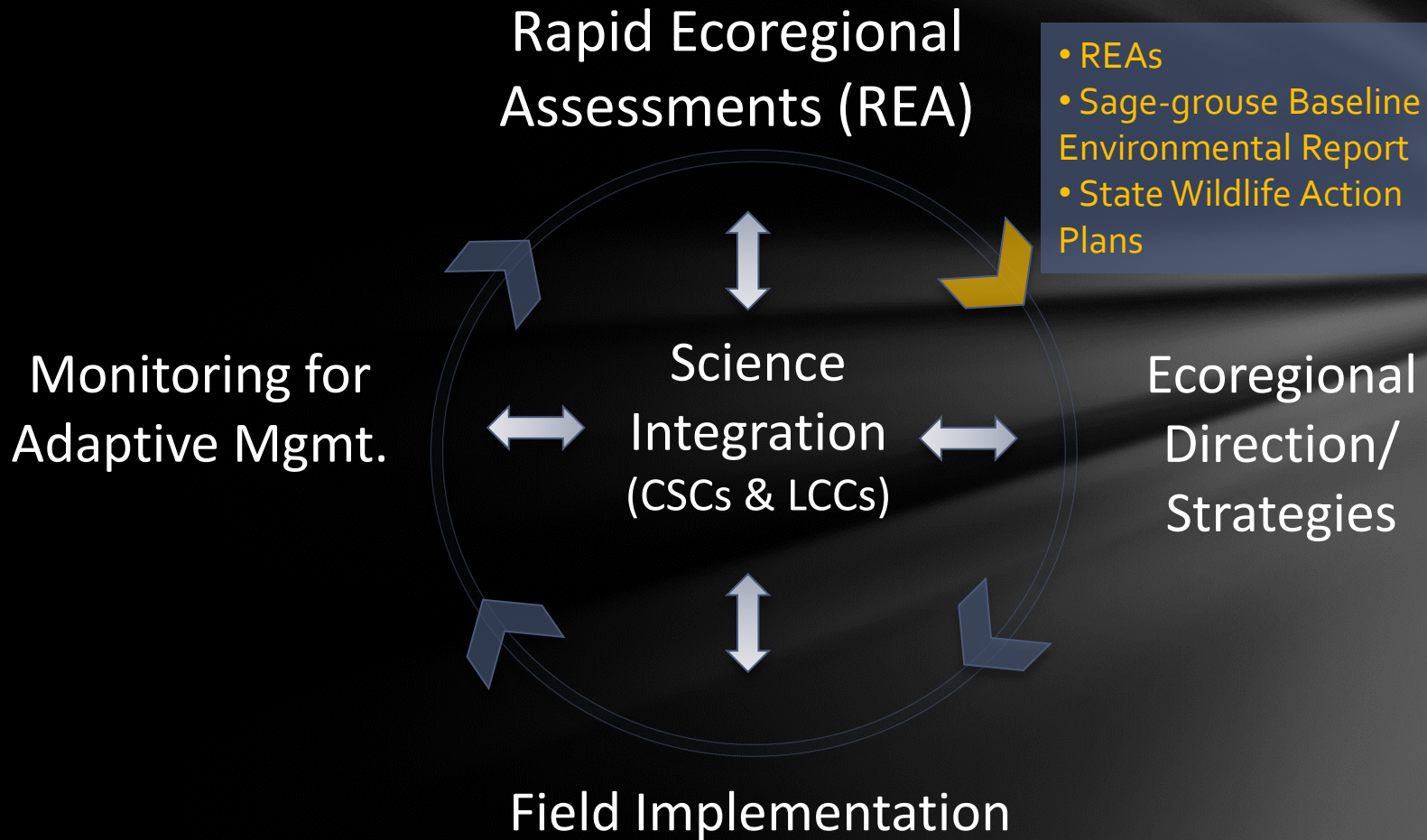
Traditional Practice		Landscape Approach
Project and Site Focused		Landscape Focus
Stove piped		Integrated
Tends to authorize uses and mitigate ecological values	New business practices are required to support this transition	Considers ecological values and use authorizations equally
Ecological Component (Individual Species)		Ecological Function and Service



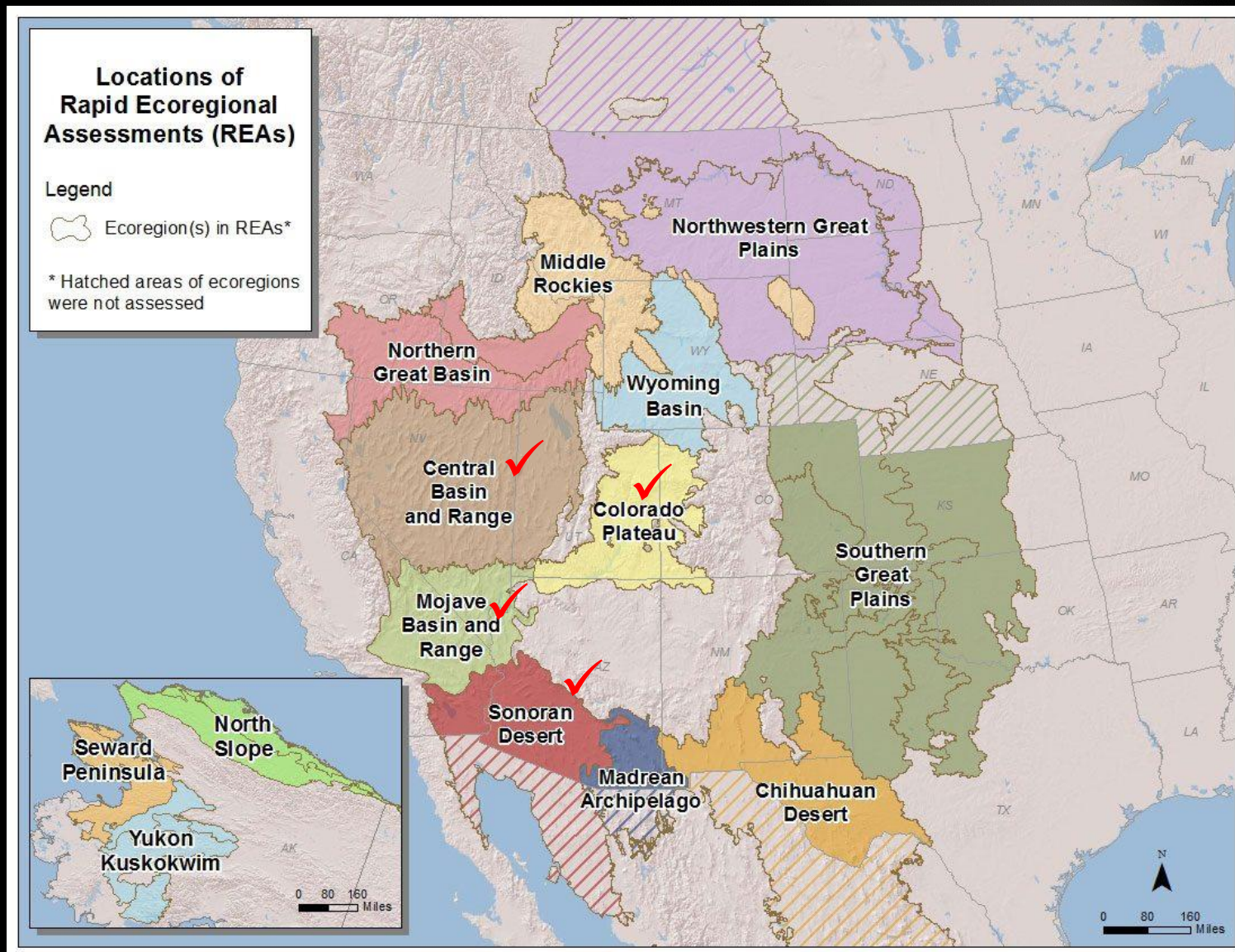
# BLM's Landscape Approach

BLM

*BLM's Landscape Approach*



# Rapid Ecoregional Assessments (REA)





# Three Components of REAs

Conservation Elements + Change Agents = Management Questions

**EX: Species  
Habitat  
Soils**



*"what we want  
to conserve"*

**EX: Invasive Species  
Fire  
Climate Change  
Human Development**



*"what is threatening our  
resources"*

**EX: Where is intact sage-  
grouse habitat threatened  
by climate change?**



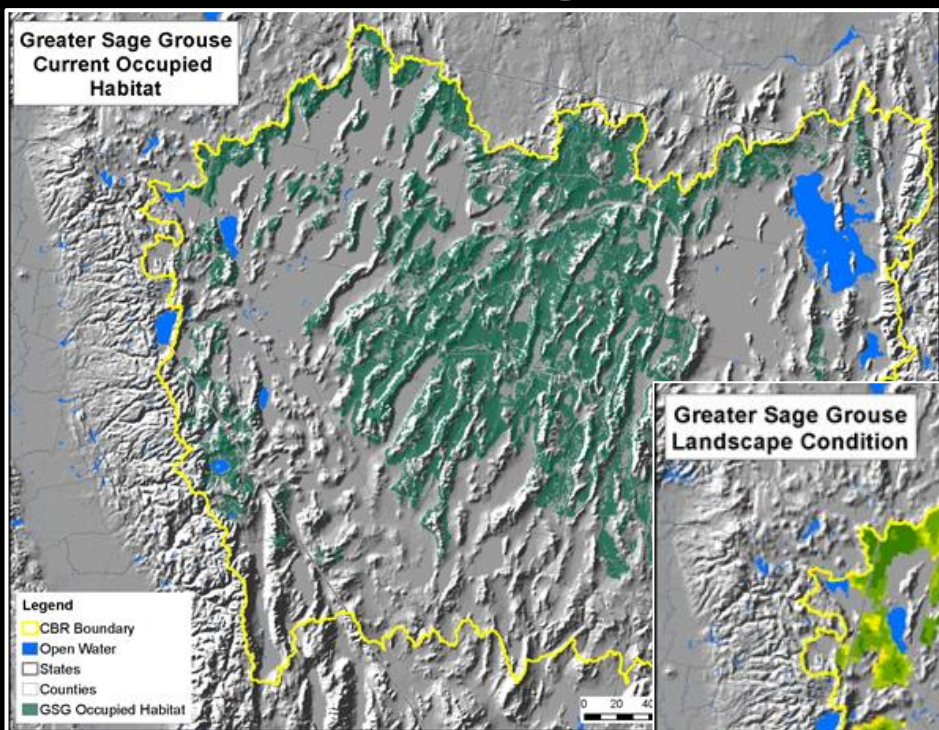
*"what land managers need  
to know"*

# What is a Rapid Ecoregional Assessment?

- Identify/answer management questions
- Document key resource values
- Describe influences from change agents
- Assesses the collective effects of projected trends
- Data are to identify key opportunities for resource conservation, restoration, and development
- Identifies science gaps and data needs
- Baseline info to evaluate and guide future management actions

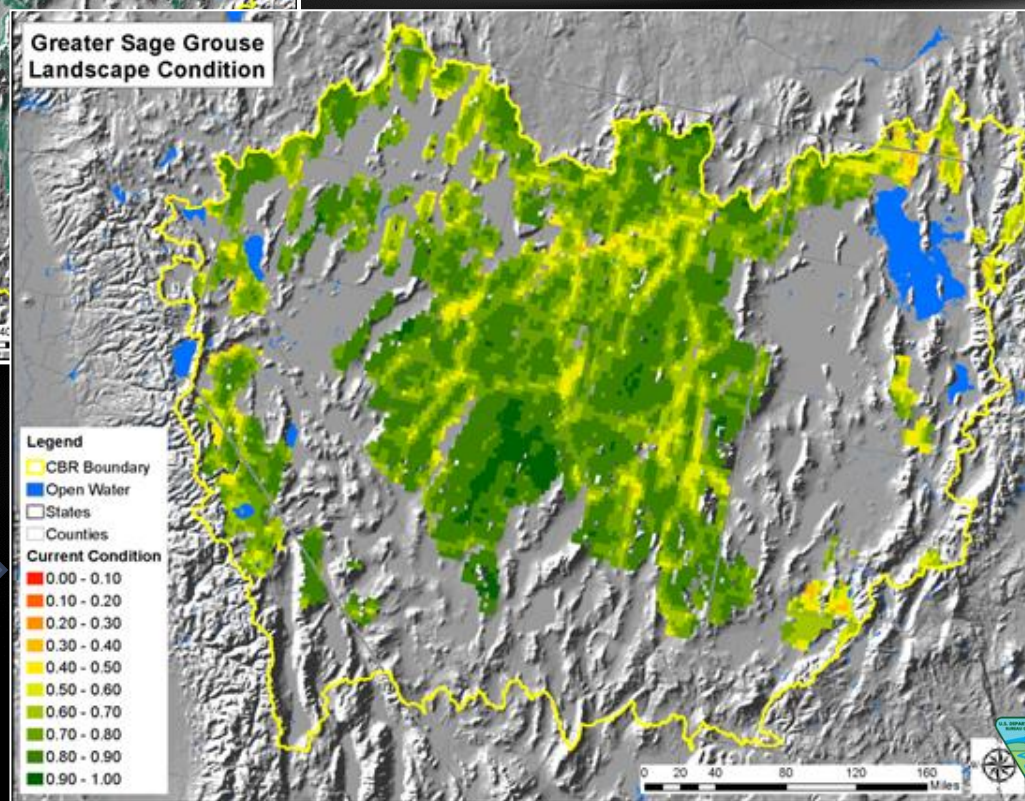


# Central Basin and Range REA Sage-Grouse Case Study



Occupied Habitat

Current Condition  
Related to Development

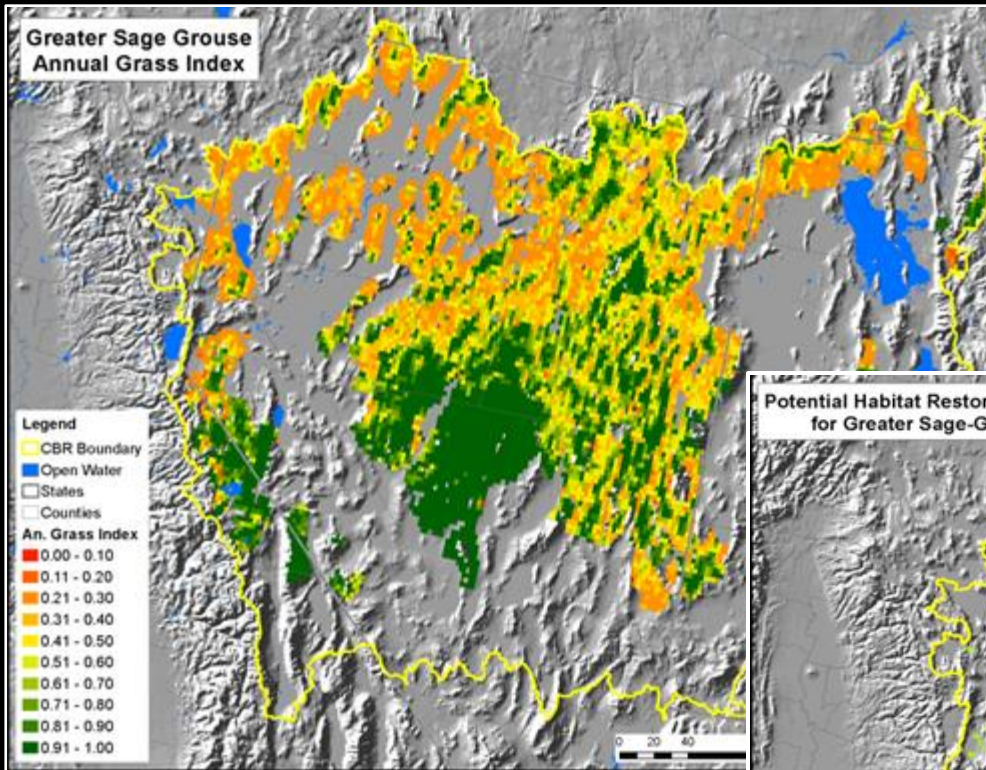




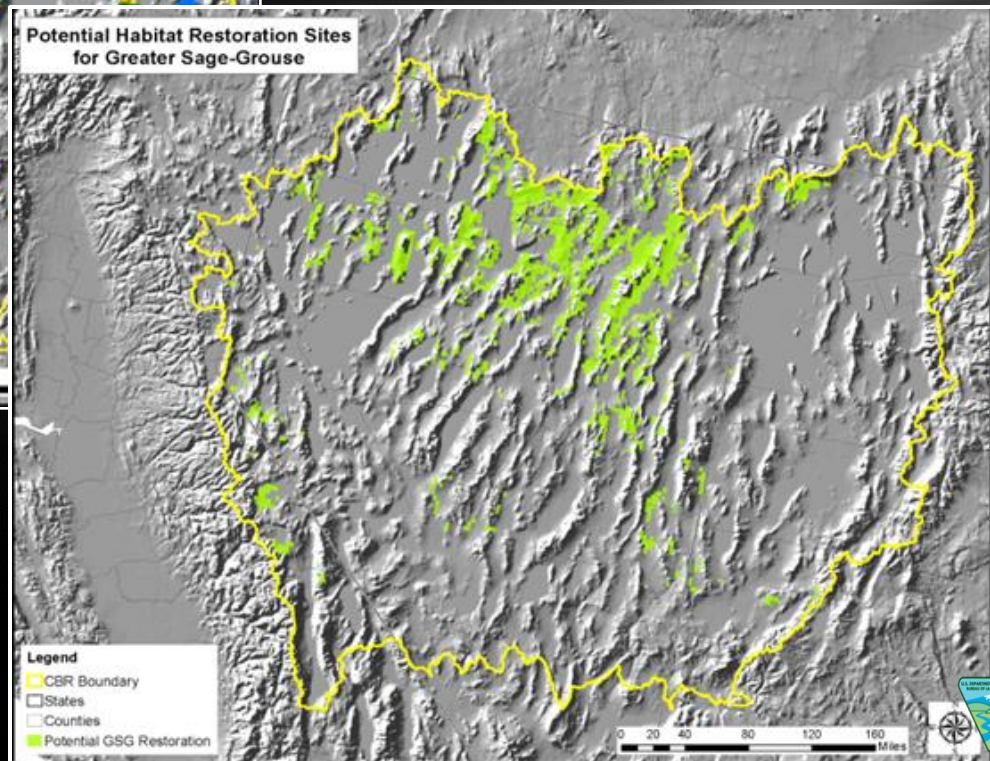
# Central Basin and Range REA Sage-Grouse Case Study

BLM

BLM's Landscape Approach



Ecological Status of  
Invasive Annual Grass

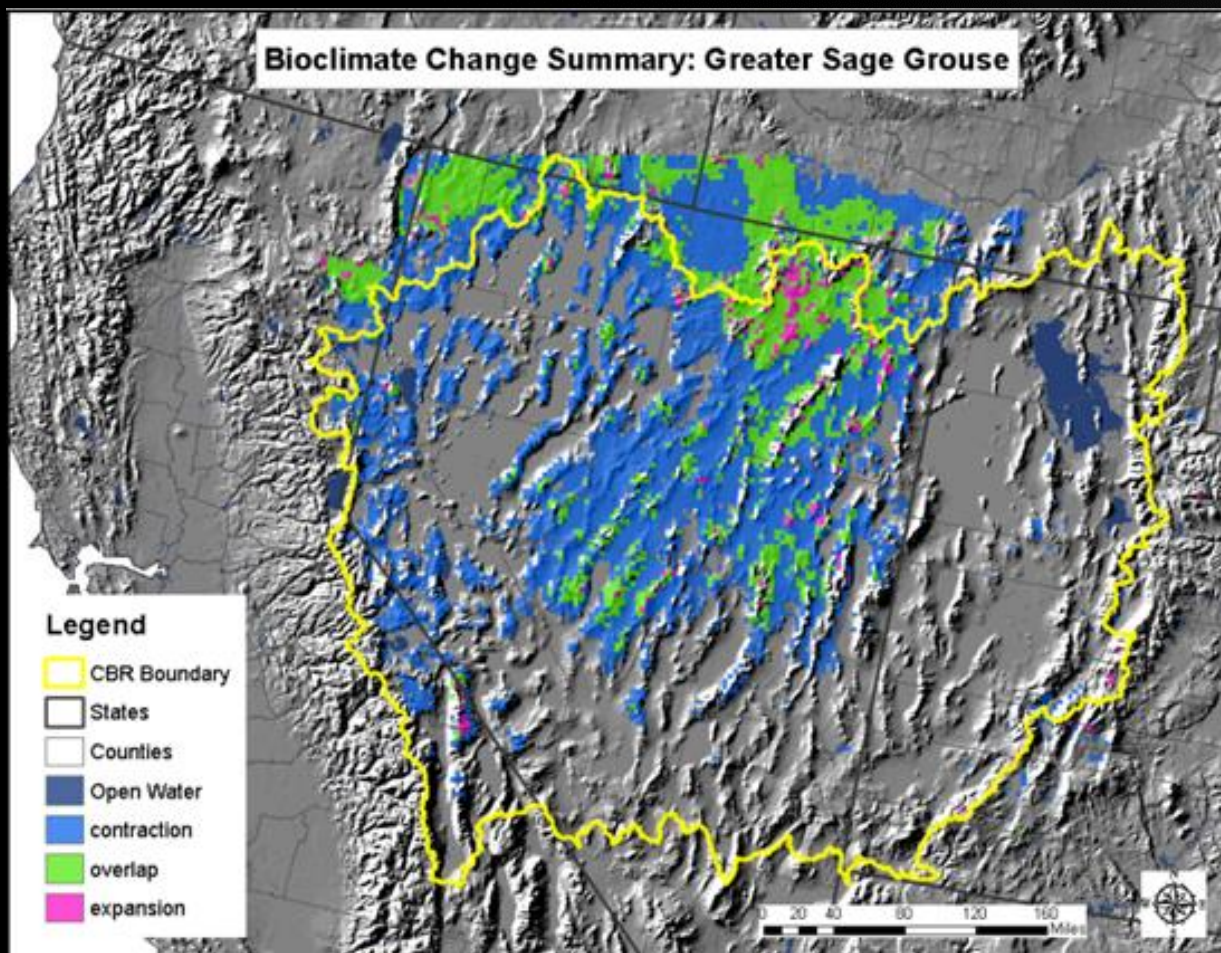


Potential Restoration  
Areas



# Central Basin and Range REA Sage-Grouse Case Study

## Projected Bioclimatic Change in 2060





# REA Limitations

REAs are limited in scope

- Level III ecoregion
- Broad vegetation classifications
- Not a NEPA or decision document
- Used data that was available at the time
- Useful baseline data for BLM managers and partners in developing LUPs, regional planning/mitigation strategies, research needs

# How BLM Is Using REA Information

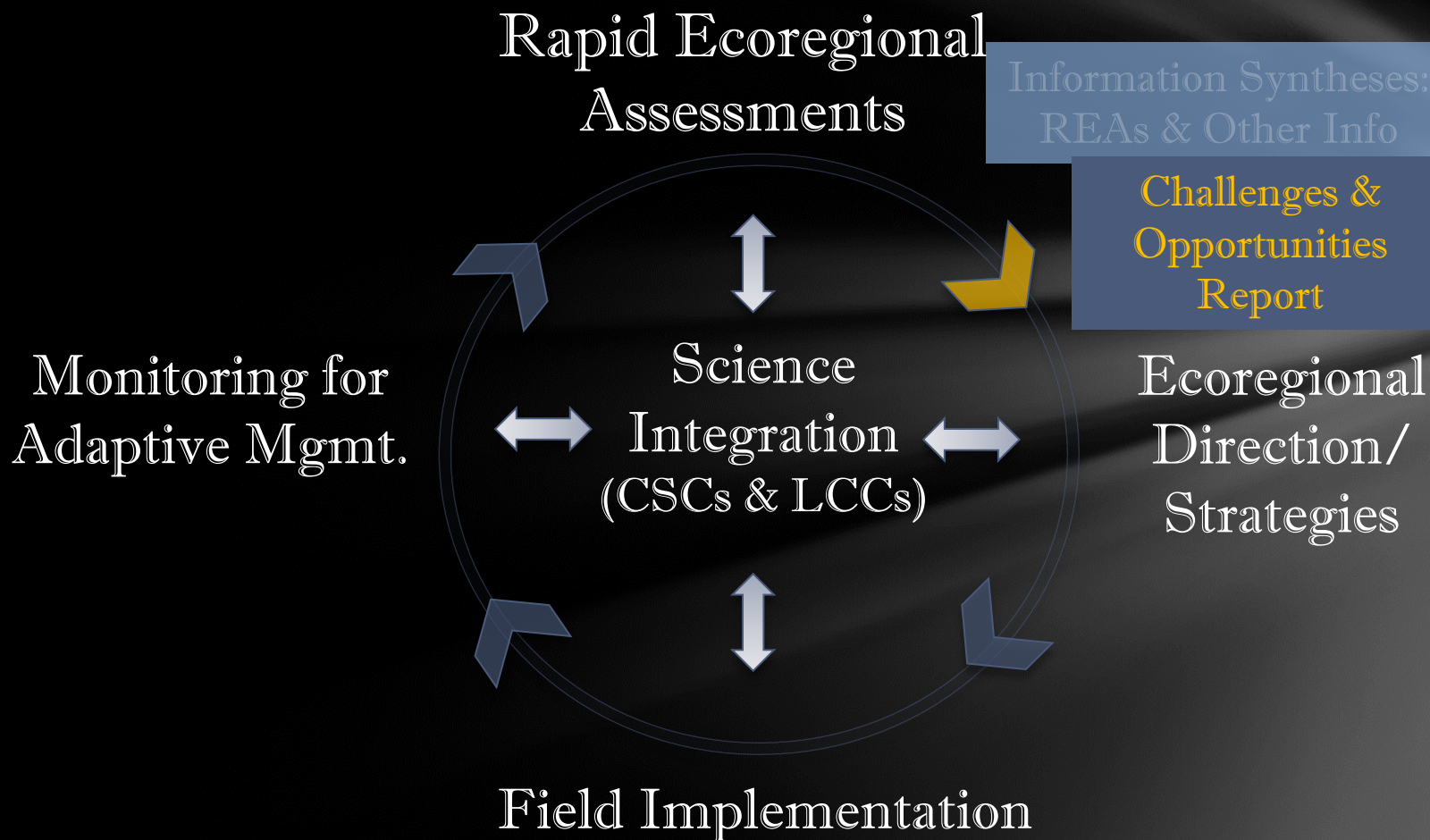
- Nevada-Northeast California Sub-regional Greater Sage-grouse EIS
- Resource Management Plan revisions and updates
- Regional mitigation strategies development
- Healthy landscapes focal area identification
- Climate change adaptation strategies
- Assessment, Inventory, & Monitoring Strategy



# BLM's Landscape Approach

BLM

*BLM's Landscape Approach*



# What the Great Basin LCC is Doing

Great Basin LCC steering committee has  
agreed to create the report and has:

- Convened partners and identified teams
- Developed an outline and process
- Developed a template to serve as a roadmap





# Challenges and Opportunities Report

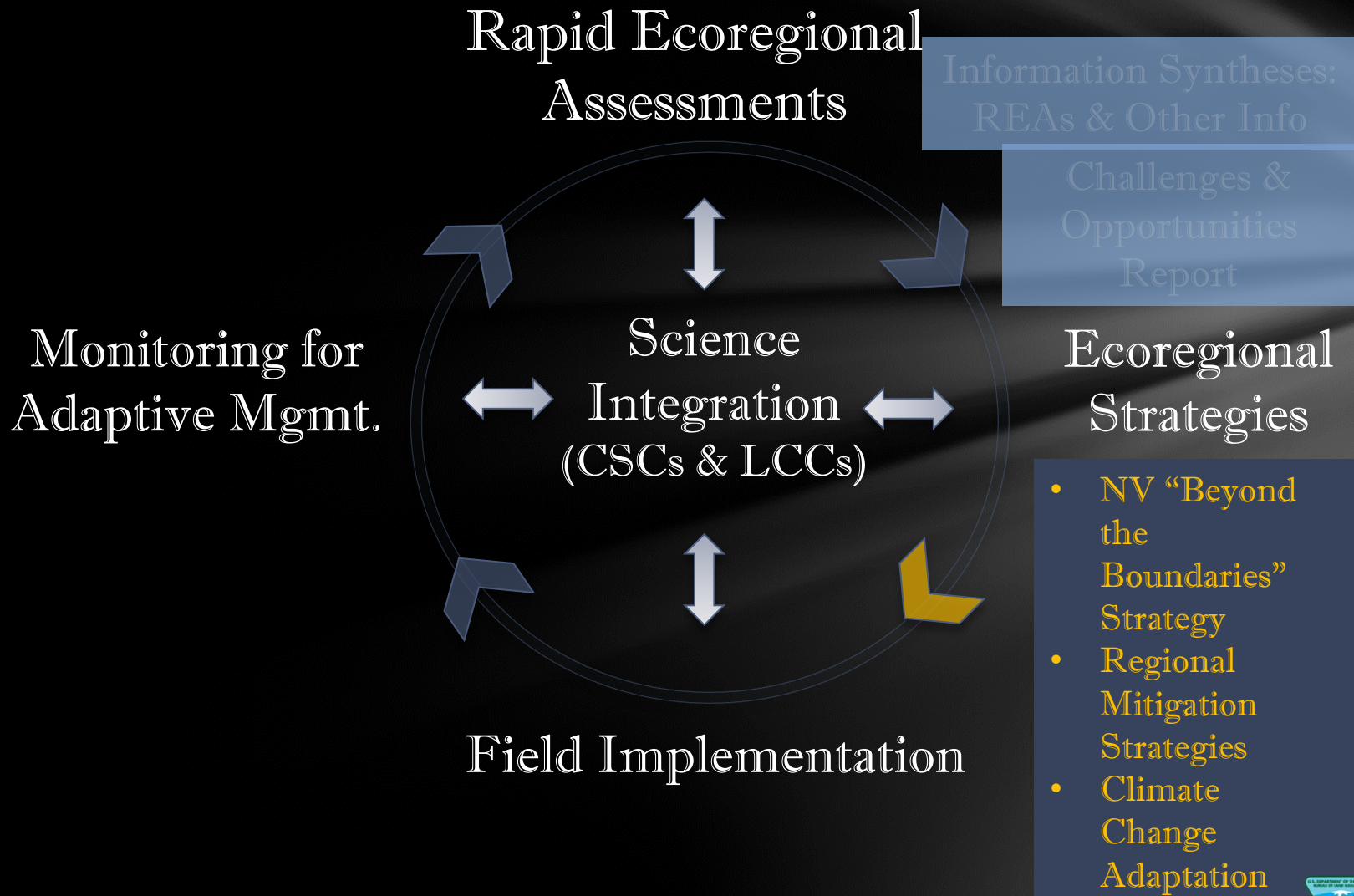
## Report will:

- Outline the regional challenges and opportunities
- Describe current actions
- Identify additional actions over the next 3-5 years
- Coordinated with state, Tribal, federal and non-governmental partners
- Use the Landscape Conservation Cooperative and other existing partnerships to facilitate this coordination

# BLM's Landscape Approach

BLM

*BLM's Landscape Approach*

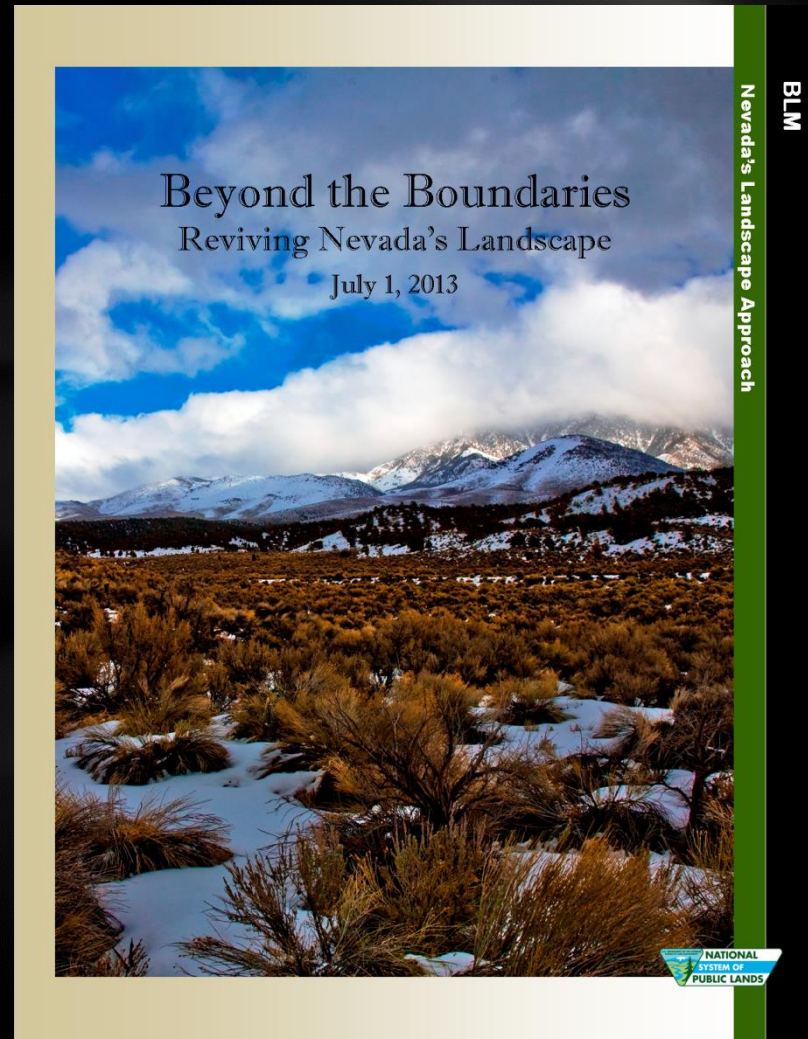




# BLM Nevada's Landscape Approach

## Beyond the Boundaries

- Consistent actions with a landscape effect
- Mirrors values and change agents in REAs
- Incorporates Secretary's Climate Change Strategy and BLM's Landscape Approach



# Beyond the Boundaries - continued

- Describes integration of programs within BLM Nevada
- BLM's field offices maintain their central role
- Landscape approach helps focus and integrate local management efforts
- Provides important foundation for developing coordinated management strategies with stakeholders



# Regional Mitigation Strategies

- Solar Regional Mitigation
- Develop consistent, regional approach to mitigating impacts
- Dry Lake Solar Energy Zone Regional Mitigation Plan
- Strategy = systematic, collaborative approach for off-site mitigation actions and monitoring

## Regional Mitigation Strategies Continued

- Used Mojave Basin and Range Rapid Ecoregional Assessment Data
- Used TNC Ecoregional Assessment Data
- Combination of data identified area for non-development

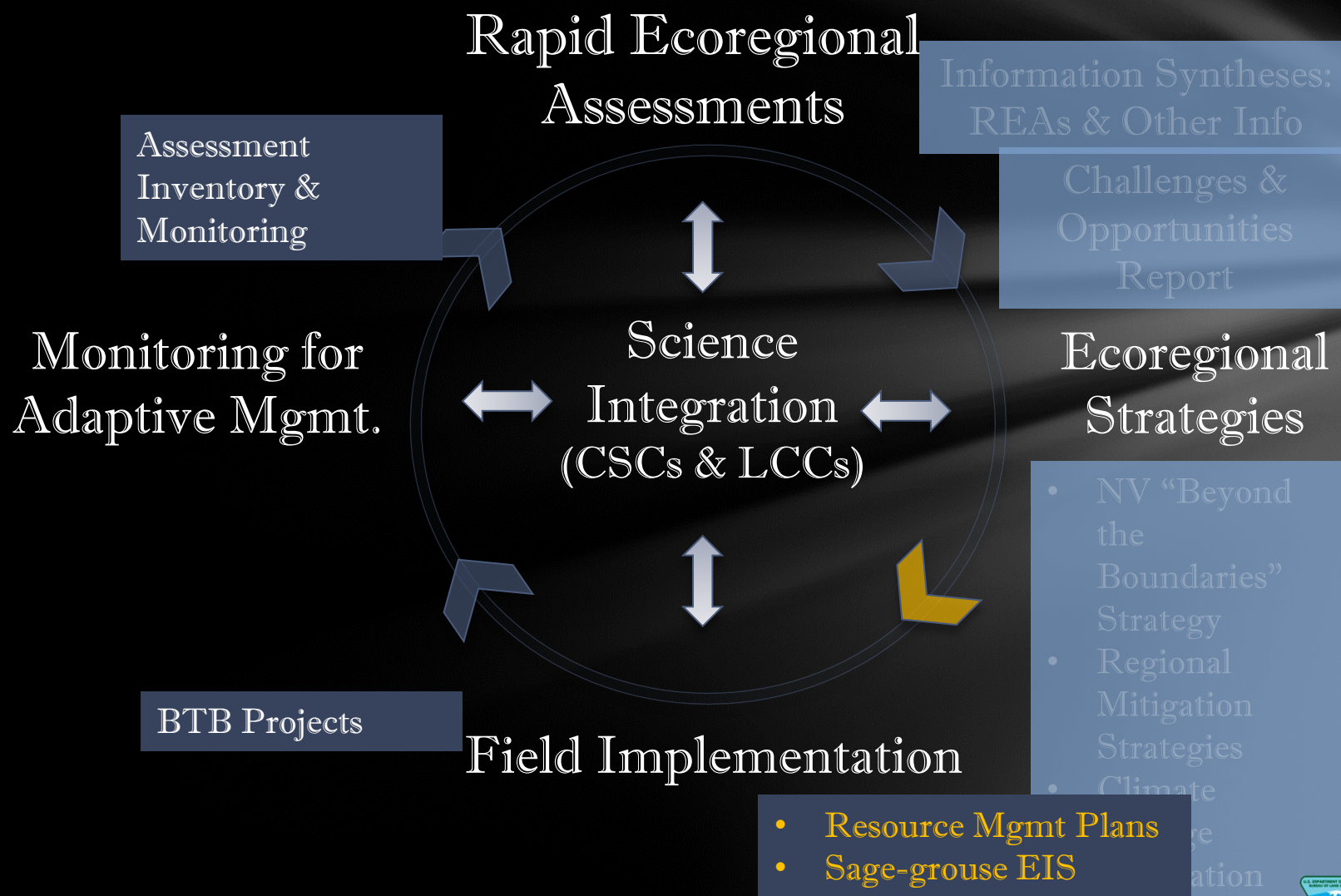




# Climate Change Adaptation Strategy and Landscape Management

- Strategy being developed
- Key priorities
  - Sustain basic ecological processes
  - Conserve intact areas and work to restore connectivity
  - Conserve and restore priority habitats
  - Manage new development to avoid and minimize impacts on- site and mitigate impacts offsite, when necessary
  - Focus restoration investments
  - Marshall scientific resources to inform climate change adaptation
  - Help communities/partners develop and implement strategies

# BLM's Landscape Approach



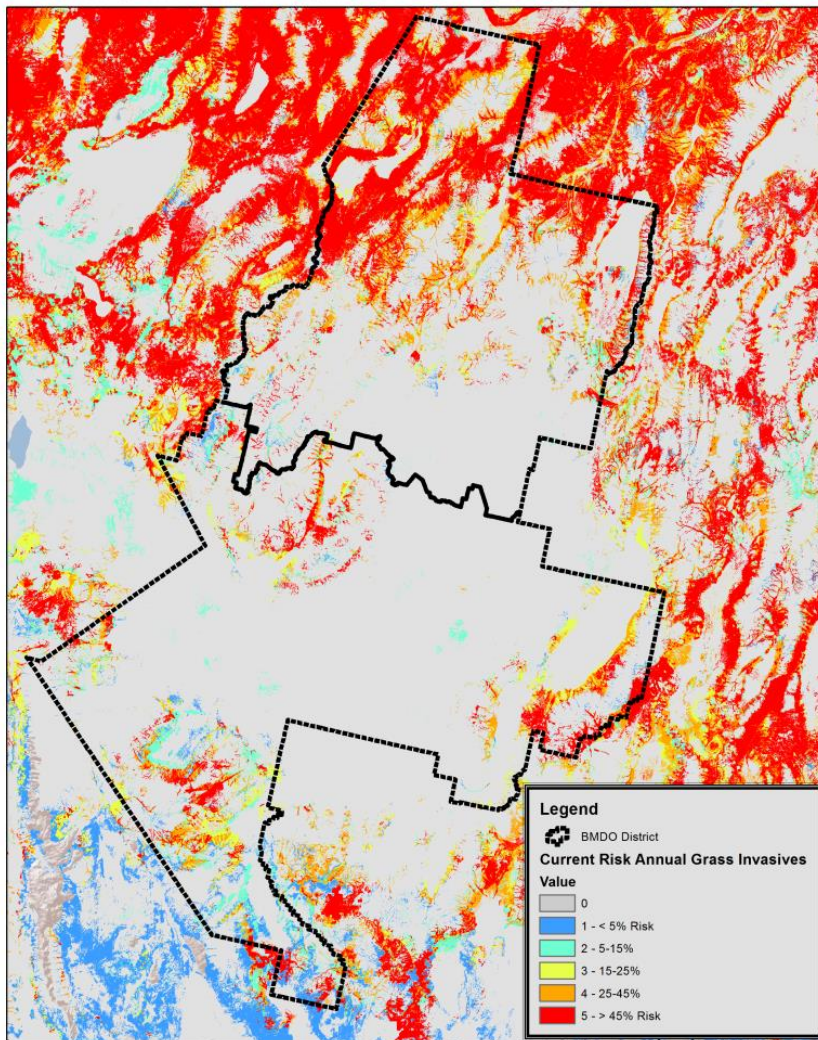


# Using Rapid Ecoregional Assessments (Step Down Planning RMP Level)

- Provides regional context
- Data and assessment results used in description of the affected environment
- Used in analysis of alternatives and cumulative effects
- Provides projections of development and climate change for 2025 and 2060

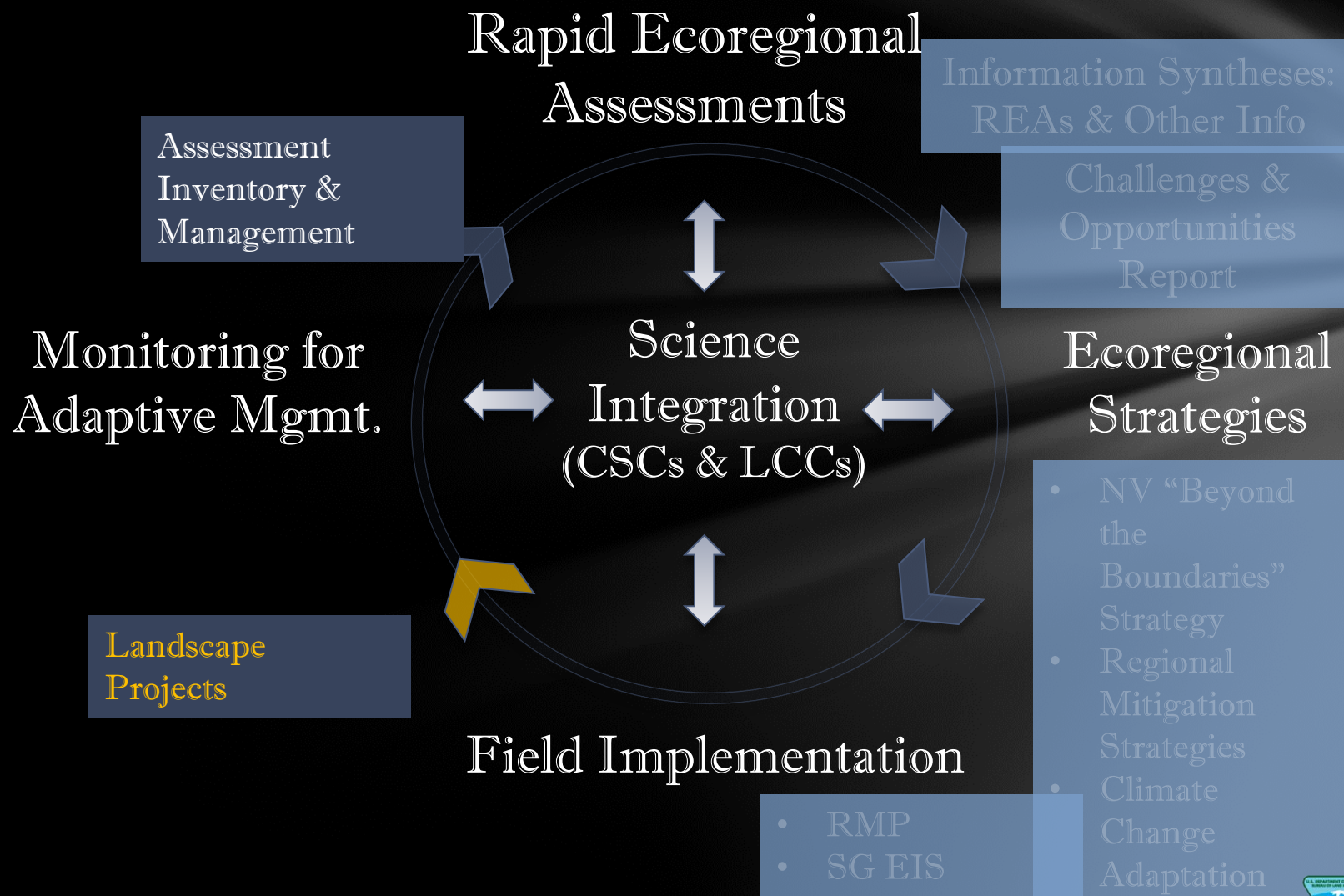
# Using Rapid Ecoregional Assessments (Step Down Planning RMP Level)

CBR & MBR REA Current Fire Risk Model for BMDO



- Provides information to focus management actions
- Data can be used to identify cross jurisdictional opportunities



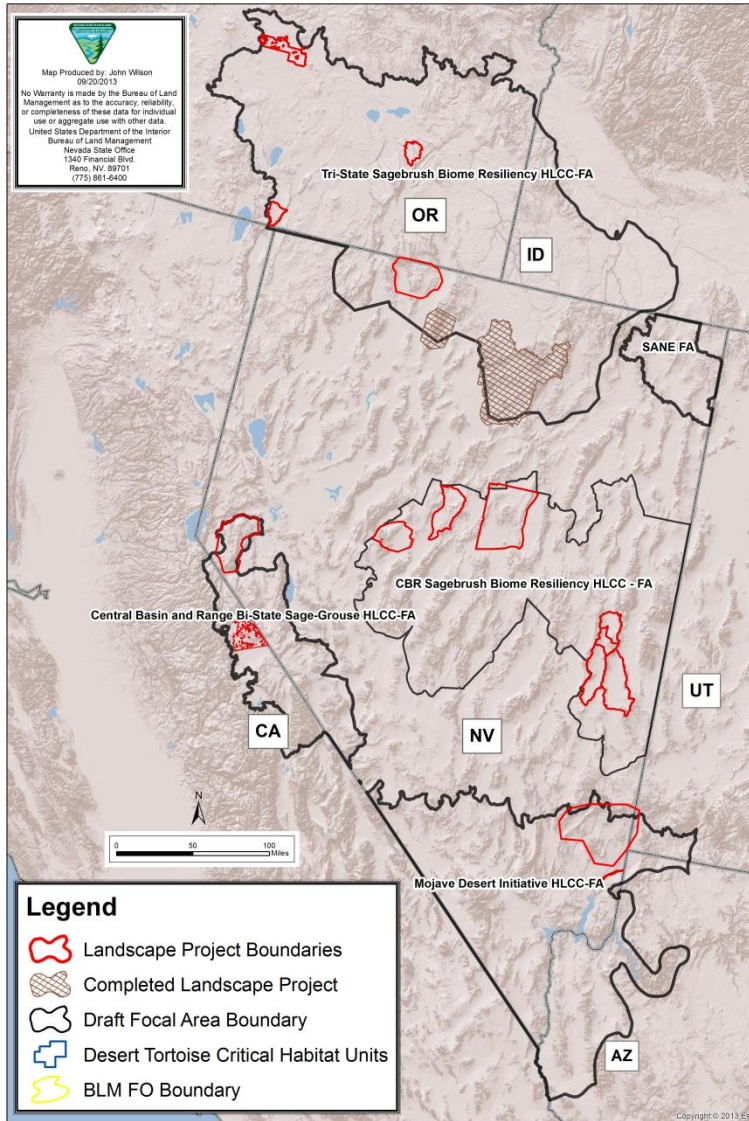


# Field Implementation – Landscape Projects

BLM

*BLM's Landscape Approach*

## NV BLM Healthy Landscapes Program Draft Focal Areas (FAs) & Landscape Project Locations

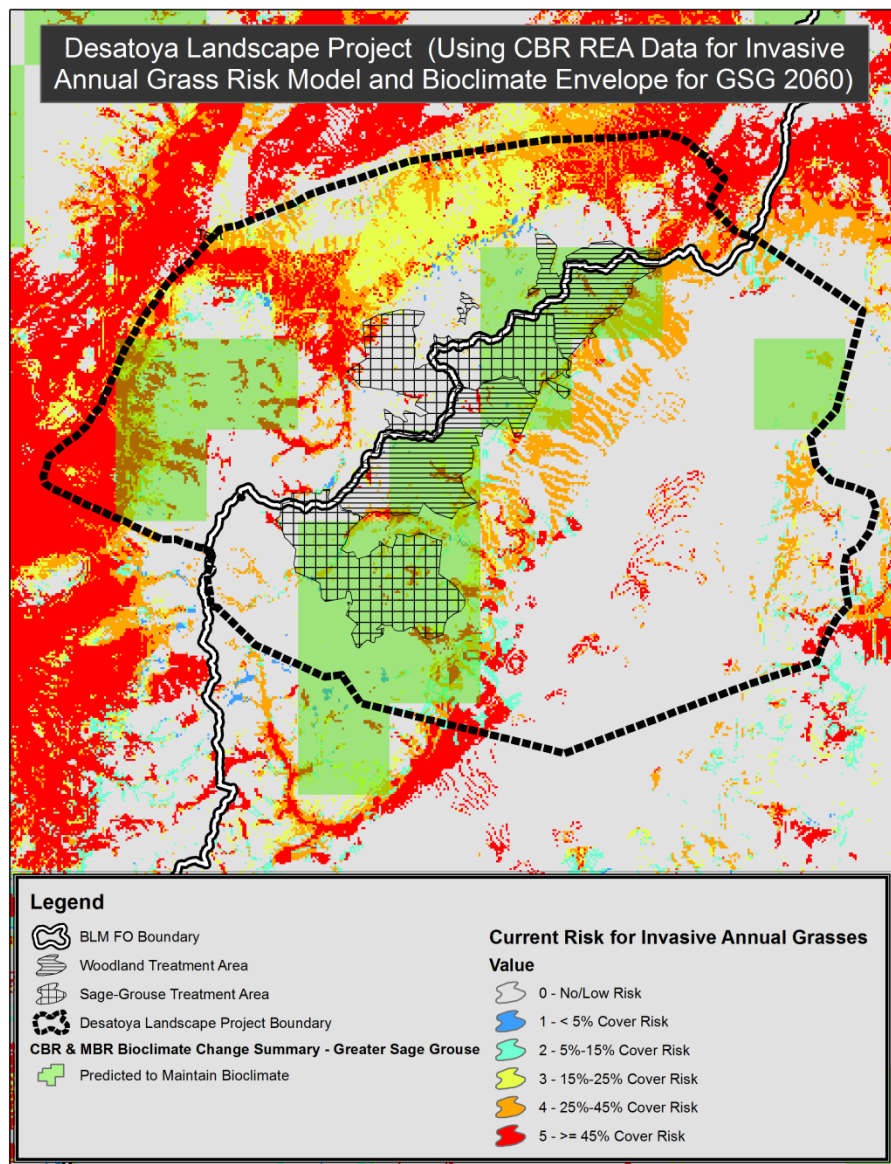


- Developing focal areas to focus efforts across jurisdictional boundaries
- Associated landscape projects in various stages of implementation
- Sage-grouse and desert tortoise are focal landscape species' habitats



# Field Implementation

- Desatoya landscape restoration project and treatment boundaries

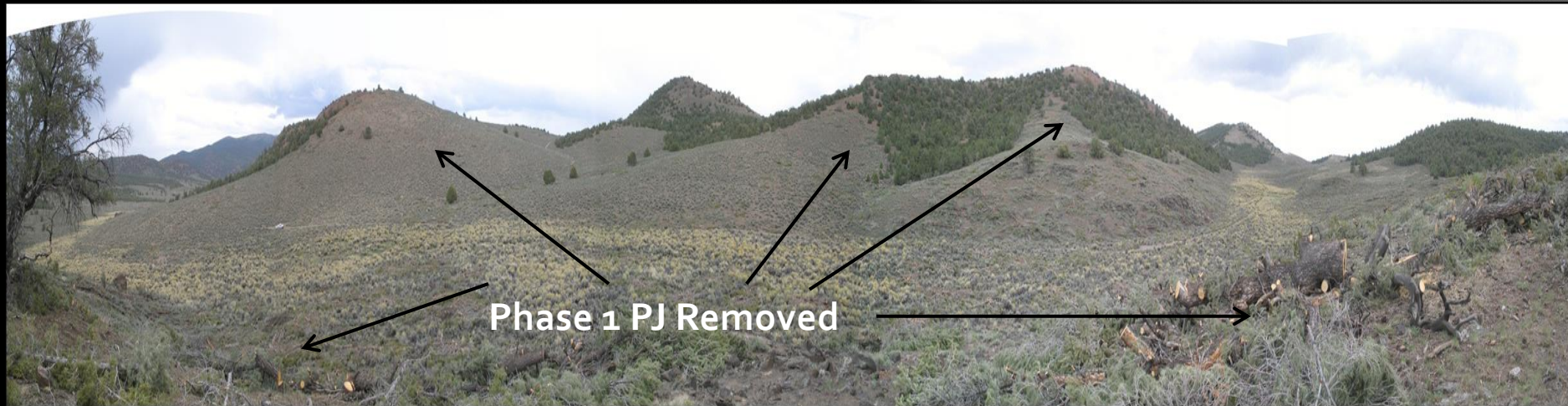




# Desatoya Mountains Habitat Resiliency, Health, and Restoration Project Dalton Canyon Treatment - Unit 1



April 29, 2013



May 06, 2013



Phase 1 density PJ removal to restore sage-grouse brood rearing  
wet meadow habitat; Desatoya Mountains landscape project  
(removed 563 acres April 2013)

Encroached Rabbitbrush





## Dalton Canyon Rabbitbrush Encroachment

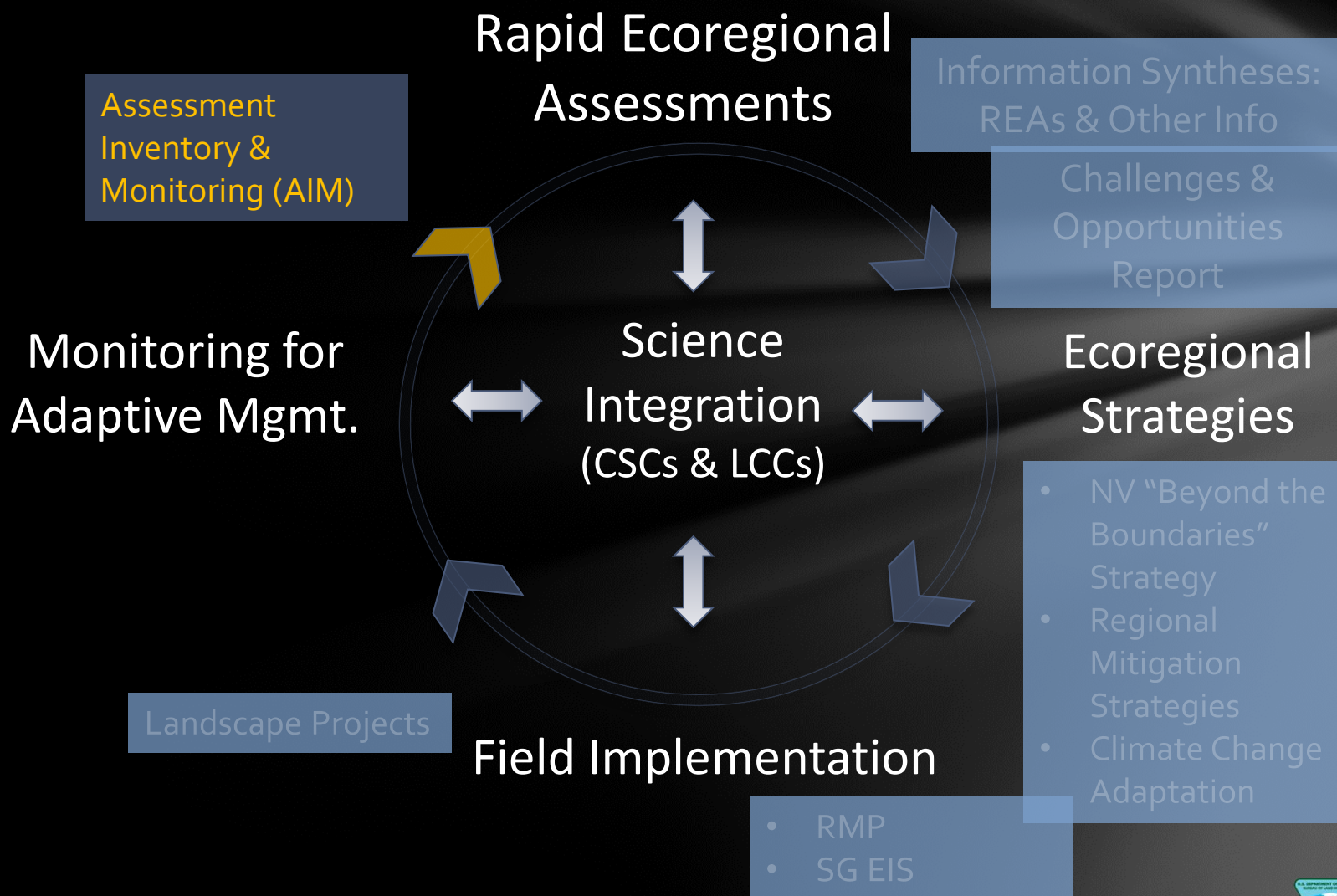




# BLM's Landscape Approach

BLM

*BLM's Landscape Approach*



# Assessment, Inventory, and Monitoring Strategy

(Monitoring for Adaptive Management)

- Integrated monitoring program started in 2011, additional data collection in 2012 and 2013
- Partnership with Great Basin Institute (GBI)
  - 2011 – expanded AIM pilot to all sites in GBI Land Health Assessment project
  - AIM and 17 Indicators of Rangeland Health protocol very similar
  - Over 700 plots sampled 2011-2012
  - Approximately 350 plots sampled 2013
- Concept expanding to BLM in Idaho & California



# Assessment, Inventory, and Monitoring Strategy

## (Monitoring for Adaptive Management)

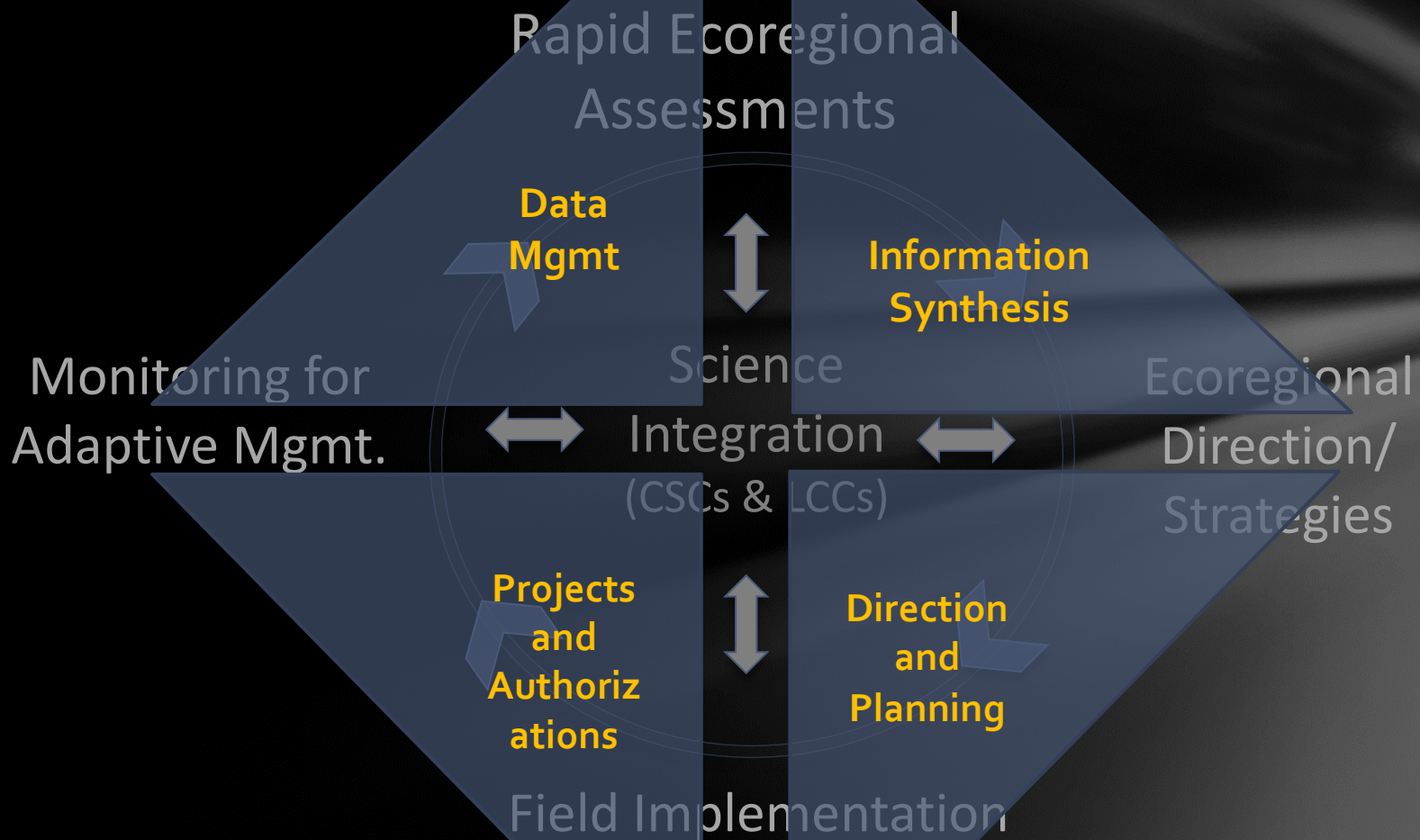
2013 and beyond

- Aquatic core indicators being developed (nationally)
  - Currently just for flowing water systems
  - Eventually will include still water systems
  
- Data to be housed in central repository
  - Database for Inventory, Monitoring & Assessment
  - Offices will be able to download a copy of master data set

# BLM's Landscape Approach

BLM

*BLM's Landscape Approach*





# Questions?



# BLM

## *BLM's Landscape Approach*





# BLM's Landscape Approach

BLM

*BLM's Landscape Approach*

